

***Tikrit University***

***College of Nursing***

***Basic Nursing Sciences***



**First Year - 2023-2024**

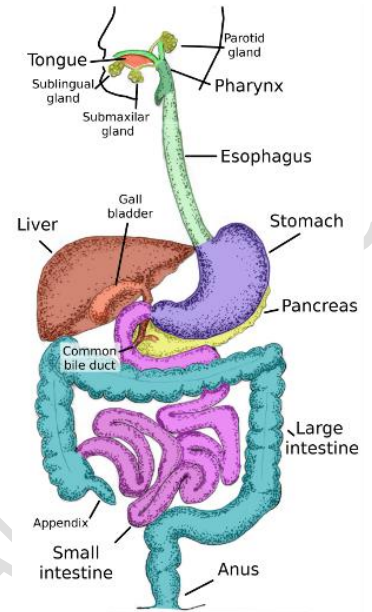
**Anatomy**

***Gastrointestinal tract(GIT)***

***Prof.Dr. Abdul-Jabbar Al-Samarrae***

## ✚ Gastrointestinal tract(GIT)

- **Organs of the gastrointestinal tract include:**
  1. Oral cavity (Mouth)
  2. Most Pharynx (throat)
  3. Esophagus
  4. Stomach
  5. Small intestine
  6. Large intestine
    - **The accessory digestive organs**
      1. **Salivary glands**
      2. **Pancreas**
      3. **Liver and gallbladder**



### 1-Oral cavity (Mouth).

❖ **Entrance to the GIT**

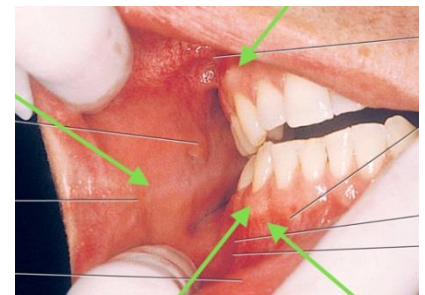
❖ **boundaries :**

- Anteriorly: **lips**
- laterally: **cheeks**
- Floor: **tongue**
- Roof :**palate**



❖ **The oral cavity is divided into two parts:**

- 1) **vestibule**: between the cheeks and the teeth

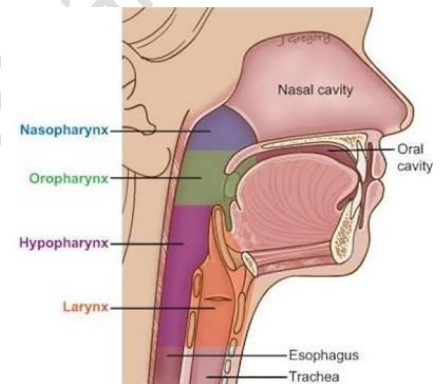


- 2) **oral cavity proper**: which is the region medial to the teeth that houses the tongue



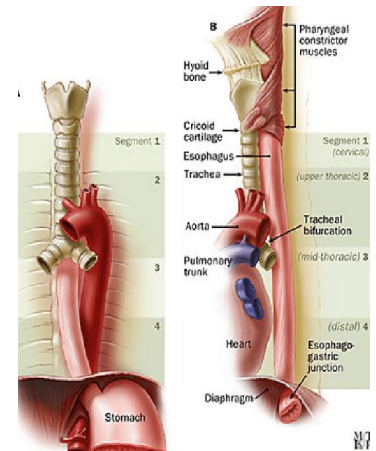
## 2. Pharynx (throat)

- it is wide muscular tube [12 cm long
- it divides into three parts according to its position:
  1. **Nasal part** [posterior to the nasal cavity]
  2. **Oral part** [posterior to the oral cavity]
  3. **Laryngeal part** [posterior to the larynx]



## 3-Esophagus

- ❖ The esophagus is a muscular tube that starts as the continuation of the pharynx and ends in the stomach.
- ❖ about 25 cm long
- ❖ it lies behind the trachea and heart
- ❖ The esophagus is divided into three parts:
  1. **Cervical oesophagus**: runs in the neck
  2. **Thoracic esophagus**: runs in the thoracic cavity
  3. **Abdominal esophagus**: runs in the abdomen
- ❖ site of constriction
  - 1) at its beginning
  - 2) at its crossing by arch of aorta
  - 3) at its termination

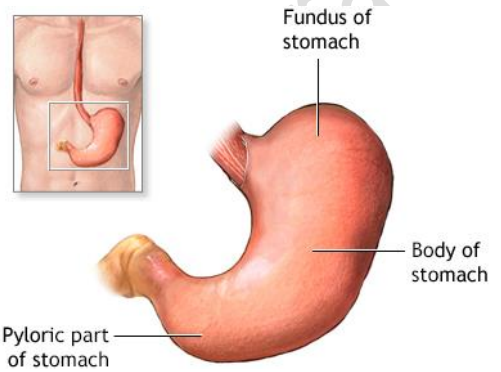


#### 4-stomach:

- ❖ It is a J shape organ
- ❖ It occupies part of following
  - 1) Epigastric
  - 2) Left hypochonderium
  - 3) Umbilical

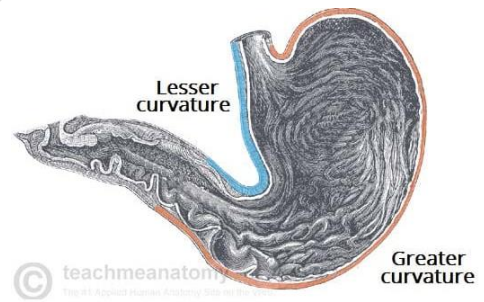
#### ❖ Parts of stomach

- 1) Fundus
- 2) Body
- 3) Pyloric part



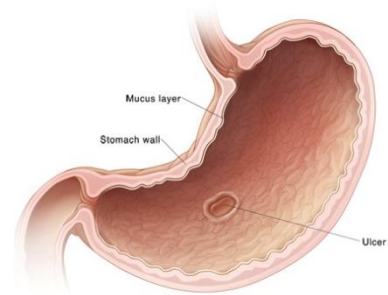
#### ❖ Border (two)

- 1) Lesser curvature
- 2) Great curvature



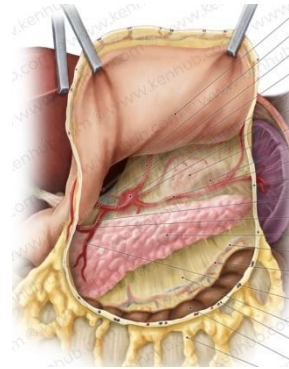
#### ❖ Wall (two)

- 1) Anterior wall
- 2) Posterior wall

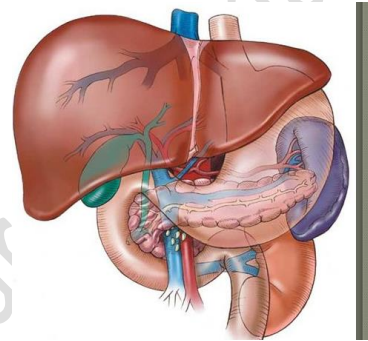


❖ **Relations:**

a) Posteriorly: **the pancreas.**

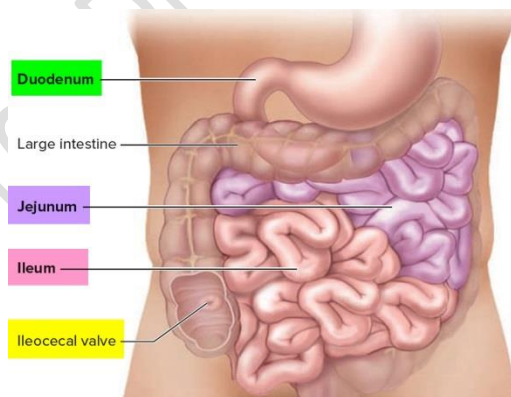


b) Anteriorly: **left lobe of the liver**



**5. small intestine**

- **length** : is about **6 meters**
- **Diameter**: average **2.5 cm**
- **Parts**: The small intestine consists of **three parts.**
  - a) the duodenum
  - b) The jejunum.
  - c) The ileum



## 6. large intestine,

- Length :about **1.5** meter long
- Diameter: average **5.8** cm
- Parts: consisting typically of four regions:
  - 1) the cecum
  - 2) the Colon :consists of
    - a) ascending colon on the right side of abdominal cavity
    - b) transverse colon
    - c) descending colon on the left side of abdominal cavity
    - d) sigmoid colon
  - 3) rectum
  - 4) anus.
  - 5)

### ❖ appendix

- is a finger-like,
- blind-ended tube
- connected to the cecum
- **located in the lower right quadrant of the abdomen,**

